

# ADERA SPOTON

## SMART THERMAL SCANNER

SPOTON is a long-wave infrared (LWIR) module integrated with an RGB camera, using advanced Artificial Intelligence (AI) developed by GovTech to conduct face detection with temperature sensing for crowds, indicated on a monitor. This compact and affordable mobile device can be easily deployed both indoors and outdoors, keeping your visitors and facilities safe while facilitating crowds.



Automate your temperature sensing in a hygienic and efficient way, with no backend infrastructure required.

### Features



#### SMART

The AI algorithm only recognizes human faces and not is affected by hot or cold objects



#### EASY SETUP

Simple link up to a monitor with temperature indication using colour codes



#### FAST & ACCURATE

Screens up to 10 faces at once with instant temperature sensing



#### SAFE & HEALTHY

No more physical contact with manual scanning



#### MOBILE

Compact and light for indoors and outdoors deployment



#### AFFORDABLE

With no infrastructure required, conduct mass temperature screens the efficient yet affordable way



#### USER FRIENDLY

Easy to understand with colour indication normal temperature, high temperature and no mask alerts

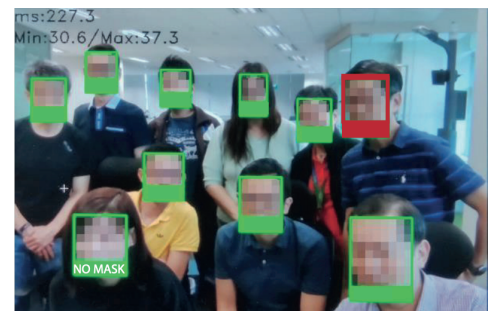


#### AUTOMATED & CONVENIENT

Automated alerts to the operator if high temperatures detected, no need for manual monitoring

### Applications

- ✓ Alert on high temperature detection by email
- ✓ Facial detection, does not recognise hot or cold objects
- ✓ Ability to sense temperature of individuals with masks or headdress
- ✓ Colour indication for efficient monitoring
- ✓ Ability to create image snapshot and save it to a local folder
- ✓ Real-time image processing powered by AI



# ADERA SPOTON

## SMART THERMAL SCANNER

### Easy Set-up

- 1 Standalone SPOTON device mounted on a laptop/tripod facing the passageway (Recommended measuring distance - within 2 meters)
- 2 Connect the laptop to the RealSense (RGB) Camera using a type C USB cable and to the LWIR Camera with a micro USB cable
- 3 Launch DetectFever.exe on the laptop



### Specifications

Device Measurement	90mm x 85mm x 30mm
LWIR Sensor wavelength	8 to 14 $\mu$ m
Thermal Arrays	160 x 120 active pixels
Frame Rate	< 9Hz
Accuracy	$\pm$ 0.3 - 0.5 $^{\circ}$ C within 2 meter range

### Hardware Recommendation

Laptop	Min. Intel i5, USB 3.1 port
Tripod	Optional
TV	Optional (Highly recommended to display live video)

Software developed & licensed by



**GOVTECH**  
SINGAPORE



Product features, specifications and appearances are subject to change without notice.  
Copyright © 2021 All ID Asia - All rights reserved

Singapore (HQ)  
All ID Asia Pte Ltd  
+65-6778-0075  
enquiry@allid.com.sg  
www.allid.com.sg

Malaysia  
All ID Asia Sdn Bhd  
+603-8075-1888  
enquiry@allid.com.my  
www.allid.com.my

Indonesia  
PT All ID Indonesia  
+62 21-4517-330  
enquiry@allid.co.id  
www.allid.co.id

Myanmar  
All ID Myanmar  
+951-652265  
enquiry@allid.com.mm  
www.allid.com.mm

Philippines  
All ID Philippines  
+632 224 2042  
enquiry@allid.com.ph  
www.allid.com.ph